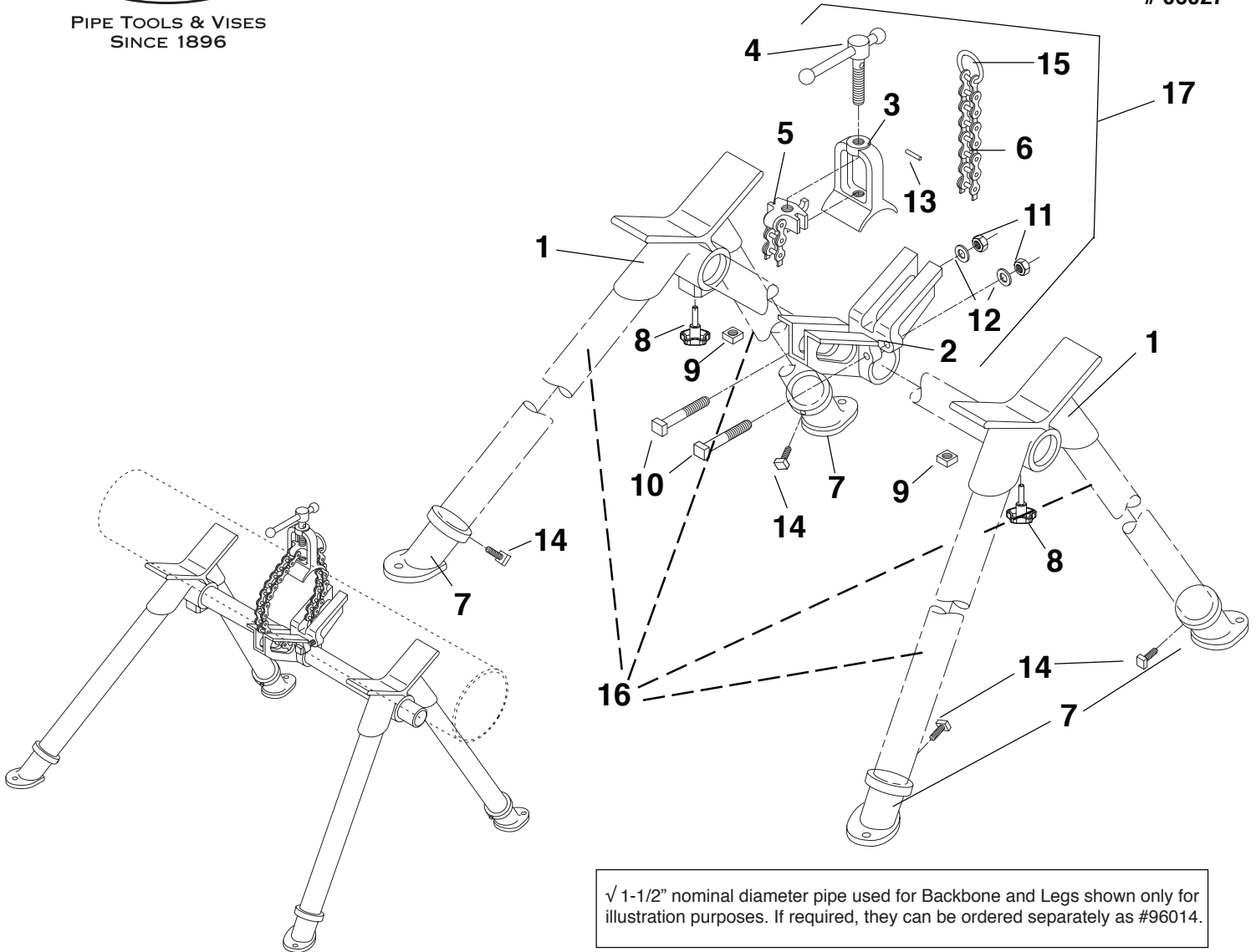




PIPE TOOLS & VISES
SINCE 1896

Field Pipe Vise (FPV20)

Replacement Parts
06027



√ 1-1/2" nominal diameter pipe used for Backbone and Legs shown only for illustration purposes. If required, they can be ordered separately as #96014.

Parts List

Ref. No.	Description	Item Code	Qty.	Ref. No.	Description	Item Code	Qty.
1	Leg Frame	92018	2	10	3" Sq. Head Cap Screw	30137	2
2	Clamp Base	92111	1	11	Hex Nut	30032	2
3	Clamp Yoke	92112	1	12	Steel Washer	30136	2
4	Main Screw	92114	1	13	Roll Pin	30027	1
5	Clamp Crosshead	92113	1	14	1" Sq. Head Cap Screw	30140	4
6	Clamp Chain	40113	1	15	Chain Ring	40294	1
7	Foot	92116	4	16	Backbone and Legs √	96014	1
8	Knob	43708	2	17	Assembled Clamp Unit*	06028	1
9	Square Nut	30141	2				

*Includes (assembled): Clamp Base (#2), Clamp Yoke (#3), Clamp Screw (#4), Clamp Crosshead (#5), Clamp Chain (#6), 3" Square Head Cap Screws (#10), Hex Nuts (#11), Steel Washers (#12), Roll Pin (#13), and Chain Ring (#15).

Reed Manufacturing Company
1425 West 8th Street
Erie, PA 16502 USA



Phone: 800-666-3691 or 814-452-3691
Fax: 800-456-1697 or 814-455-1697
www.reedmfgco.com

RP-0316-17